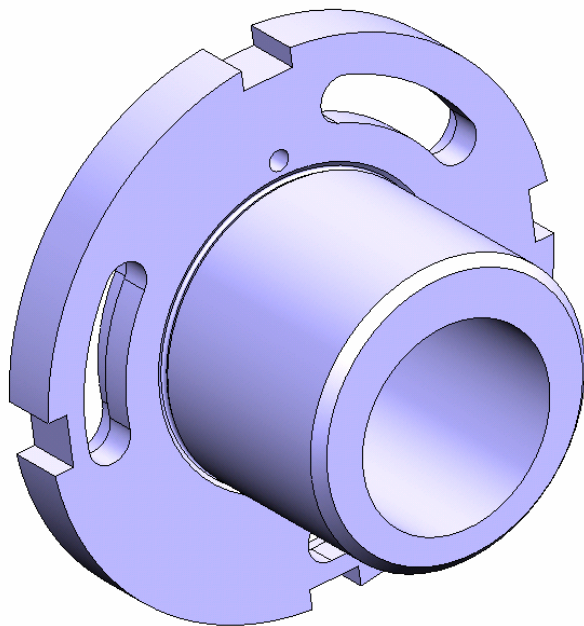




Product Bulletin

5080-196

Locating Lever Eccentric Bushing



The redesigned **Eccentric Bushing** is now pre-machined with 3 slots for the mounting screws. The slots allow for simplified and precise assembly with our new locating Lever Arm (5080-34-1), which now has 6 tapped holes in the hub. During assembly, a minimum of 3 of these holes will always be exposed. In contrast, the old bushing design only had 3 *counter-bored* holes, and the arm had *no* tapped holes. During repair, the old arm assembly would need to be properly adjusted, marked or scored to note position, removed from the machine, drilled & tapped, and re-assembled. Any minor mistake *could not* be easily corrected. The new design eliminates all this work, and allows for minor adjustments until the work and tool spindles are just where you want them.

New Features:

- Far easier to assemble
- Reduces downtime by over an hour
- Makes it easier to align spindles exactly where you want them
- Allows for fine adjustments, without the hassle of drilling and tapping all new holes

Davenport Machine OEM parts are constantly being redesigned to maximize the *value* to the customer. Any parts supplier can sell you yet another *replacement* part for your *problem*. Let the team at Davenport Machine supply you with a cost effective *solution* to it instead. Contact your local distributor, or call us directly at 1-800-344-5748 and ask about our many new and improved products that will help put profits back where they belong... in your pocket.