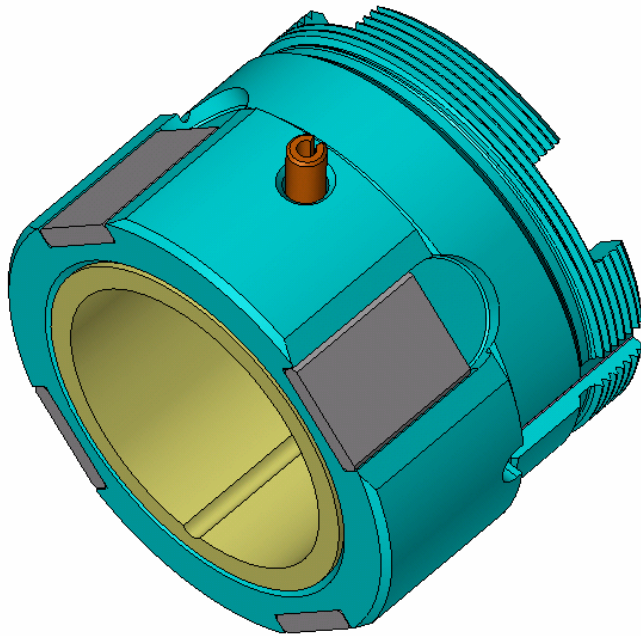




New Product Bulletin

5080-131-3

Roll Away Clutch Body w/Wear Plates



This is a re-design of our standard 5080-131 Clutch Body. The new **Roll Away Clutch Body** now accepts 4 hardened wear plates. These wear plates can be flipped end over end, and spun around on each side, exposing 4 different wear zones per plate to the roller load.

As a result, when an old-style 5080-131 would need to be discarded because the rollers had dented the body, the wear plates on the new 5080-131-3 can be quickly flipped to a new edge, and will last 4x longer, all for a lower price.

In addition, once the wear plates are all used up, they can be replaced at a fraction of the cost of the body. For the same cost of just (1) old-style body, you can get **over 12 times the life** out of (1) new 5080-131-3 and (2) extra wear plate replacement kits.

New Features:

- Lower *initial* cost.
- MUCH lower long-term cost of ownership with reduced repair costs.
- 4 times longer life than previous design.
- At least 12 times longer life with in-expensive replacement parts
- 100% interchangeability with genuine Davenport Machine OEM parts.
- 100% of the performance of the standard design.

Davenport Machine OEM parts are constantly being redesigned to maximize the *value* to the customer. Any parts supplier can sell you yet another *replacement* part for your *problem*. Let the team at Davenport Machine supply you with a cost effective *solution* to it instead. Contact your local distributor, or call us directly at 1-800-344-5748 and ask about our many new and improved products that will help put profits back where they belong... in your pocket.